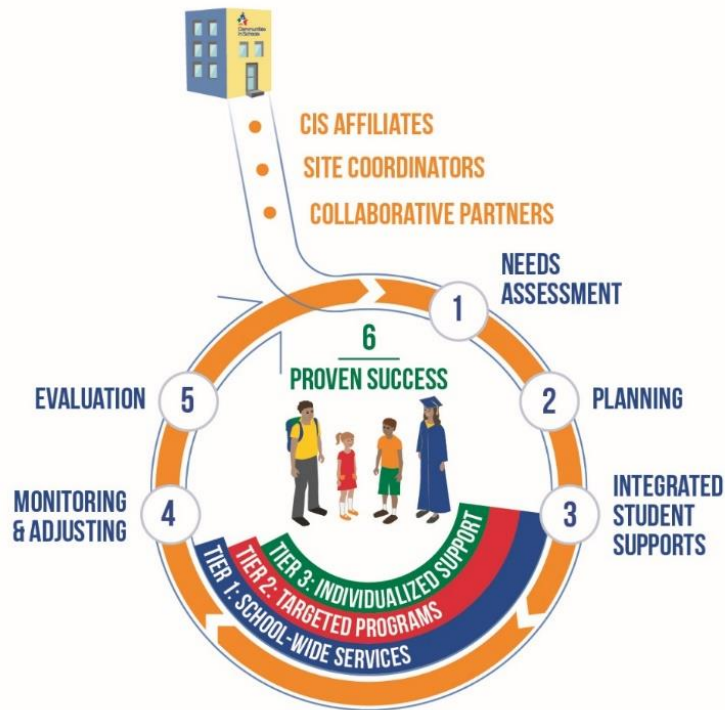


# OUR UNIQUE MODEL



Communities  
In Schools



© Communities In Schools 2016

## • CIS AFFILIATES

Hires and trains site coordinators, brings the CIS model to schools in need and mobilizes partners to provide resources.

## • SITE COORDINATORS

A trained professional who works with school administrators to assess needs, develop a plan and build a team to provide supports to schools and students.

## • COLLABORATIVE PARTNERS

Schools, businesses and community agencies all work together with site coordinators to deliver supports to students and families.

### 1 NEEDS ASSESSMENT

Analyze multiple sources of data to identify the key needs of the school and individual students.

### 2 PLANNING

Site coordinators lead their school support team to develop a plan to prioritize supports that address academic and non-academic needs.

### 3 INTEGRATED STUDENT SUPPORTS

Site coordinator and partners deliver tiers of support to the school, students and their families.



### 4 MONITORING & ADJUSTING

Site coordinator continuously monitors student and school progress and adjusts supports to optimize results.

### 5 EVALUATION

Continuous assessment of partners and student supports by the CIS affiliate to demonstrate results and improve practice.

### 6 PROVEN SUCCESS

We increase graduation, reduce dropout, and improve attendance for schools in need.